

Features

Fan hook

Fan is stably supported by hanging hook to the belt.



Excellent cooling performance even with safety vest on



2 pcs of Loop (left chest / left arm)

- Safety pin to go through the Loop (ca.10mm)
- To prevent holes in jacket



Short sleeves can fold it

Changeable from long to short sleeves with a button.



Shoulder pad

Overlapping stitch with shoulder pad lightens the burden to a shoulder while carrying reinforcement bar. (DFJ400, DFJ401 only)

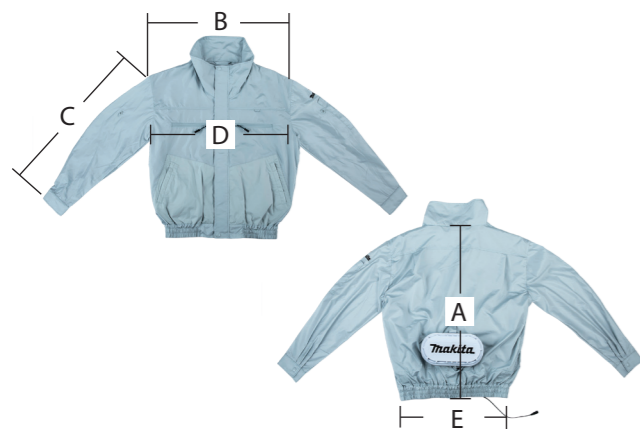


Battery pocket

Pocket for storing battery. (inside pocket)



Size



No.	size (in cm)	S	M	L	XL	2XL	3XL
A	Length	64	66	68	70	72	74
B	Shoulder	51.5	54	56.5	59	61.5	64
C	Sleeve	54	56	58	60	62	64
D	Chest	116	121	126	131	136	141
E	Waist	77-108	82-113	87-113	92-113	97-113	102-133

Longer continuous run time on a single full battery charge

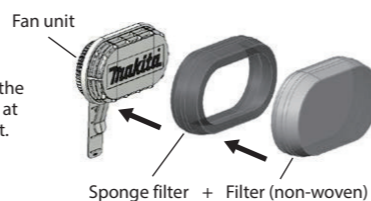
Battery holder	Li-ion Battery	Continuous run time Low / Medium / High	Charger	
	10.8V	1.5Ah BL1015		
		4.0Ah BL1040B		
	14.4V	1.5Ah BL1415N		
		3.0Ah BL1430B		
		4.0Ah BL1440		
	5.0Ah BL1450	20 / 15 / 8h		
	6.0Ah BL1460B	21 / 16 / 8.5h		
	1.5Ah BL1815N	8.5 / 6 / 3.5h		
	3.0Ah BL1830B	15 / 11 / 6.5h		
	4.0Ah BL1840B	22 / 16 / 9h		
	5.0Ah BL1850B	29 / 21 / 12h		
	6.0Ah BL1860B	34 / 25 / 14h		

Accessory

Dust cover

Attaching a filter to the intake fan unit prevents the dust invasion into jacket at work site with flying dust.

Part No. GM00001499



Cordless Fan Jacket

DFJ202 / DFJ300 / DFJ400 / DFJ203 / DFJ301 / DFJ401

Run Time (hr)	With BL1860B Low / Medium / High: 34 / 25 / 14
Air Flow Settings	Turbo / High / Medium / Low
Air Flow	Turbo / High / Medium / Low: 1.4 / 1.2 / 1.0 / 0.8 m ³ /min
Size	S / M / L / XL / 2XL / 3XL
Pockets	DFJ202, DFJ203, DFJ300, DFJ301 : 6 DFJ400, DFJ401 : 8
Net weight	DFJ202 : 710 g (1.6 lbs), DFJ203 : 730 g (1.6 lbs) DFJ300 : 820 g (1.8 lbs), DFJ301 : 850 g (1.9 lbs) DFJ400 : 790 g (1.7 lbs), DFJ401 : 810 g (1.8 lbs)

Electronic 4-Speed

Standard Equipment : Fan Hook

Battery & Charger Sold Separately. Net weight: Jacket size L + Fan

weight according to EPTA-Procedure 01/ver.2.1 Items of standard equipment and specifications may vary by country or area.

Makita Corporation

3-11-8 Sumiyoshi-cho, Anjo, Aichi, 446-8502 Japan

PRINTED IN JAPAN 201606

Makita

Cordless Fan Jacket

DFJ202 / DFJ203 / DFJ300
DFJ301 / DFJ400 / DFJ401

Satisfy Professional's Needs

LXT
LITHIUM-ION
CXT

Excellent cooling performance



Longer runtime
12hr High mode
(with BL1850B)

Available in 3 types for different applications

For general work

Polyester
DFJ202
DFJ203



For welding/ grinding work

Cotton
DFJ300
DFJ301



For outdoor work

Polyester
+ Titanium
processing
DFJ400
DFJ401



Stay cool in hot harsh job site environments.

Stand-up collar



Photo : DFJ400

With hood

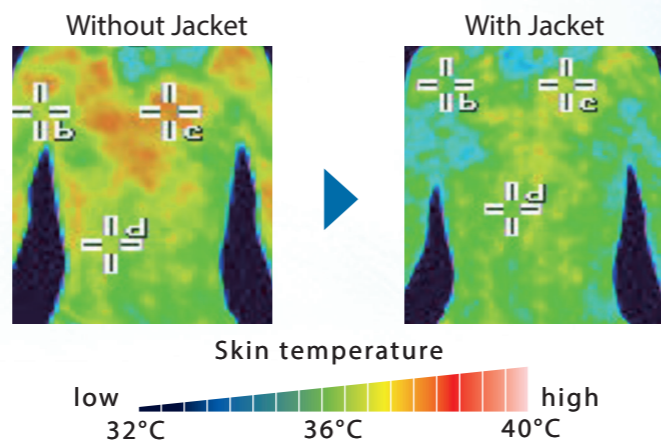


Photo : DFJ401

Comparison of body temperature rise during work

Skin temperature after 10-minute work under temperature of 35°C and humidity of 60%

Never use the fan jacket where temperature reaches more than 50°C (122°F). Otherwise it may cause burns on your skin. Also avoid using in high humidity.



Powered by Makita Li-ion Battery

CXT

10.8V LITHIUM-ION



Battery holder GM00001490



LXT LITHIUM-ION

14.4V LITHIUM-ION



Battery holder GM00001489



Battery and charger are sold separately.

Line up of Jacket

Jacket + Fan

For general work

Superior moisture permeability and water repellent

Polyester



Fan : White



Stand-up collar DFJ202



With hood DFJ203



Battery and charger are sold separately.

For welding/ grinding work

Strong in heat and sparks

Cotton



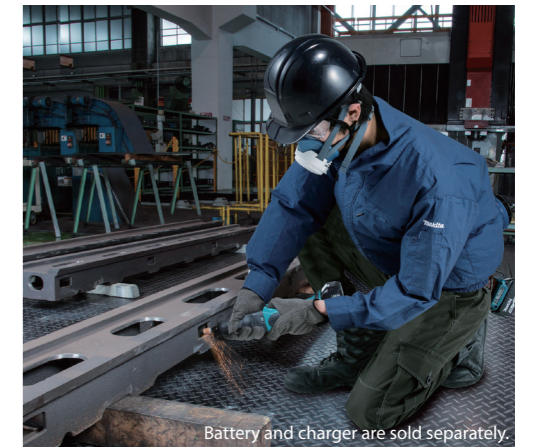
Fan : Black



Stand-up collar DFJ300



With hood DFJ301



Battery and charger are sold separately.

For outdoor work

Polyester +Titanium processing

Reflective in ultraviolet rays and infrared rays



Fan : White



Stand-up collar DFJ400



With hood DFJ401



Battery and charger are sold separately.

Battery holder

Optional accessory

Air flow control panel



Air flow mode indicator

Turbo button

When Turbo button is pushed, air flow will be increased for about 1 minute. (After 1 minute, the air level comes back to normal mode.)



Power ON/OFF & Cooling air volume control (3stages)

Each time you push the button High/ Medium/ Low are selectable and displayed at the mode indicator.

Belt clip with lock
Thanks to Belt clip with lock Battery will be stabilized firmly. (Features only 14.4V/18V Battery)

USB Power terminal
• Type A DC5V-2.1A
• Single port
• With rubber cap

Button for unlocking (GM00001489 only)



USB output switch
Slide switch enables USB apparatus to operate.