



# Cordless Vacuum Cleaner Series



DVC150L / DVC151L AC+DC

DVC152L / DVC153L / DVC154L DC only

# More capacity for efficient cleaning



## AC + DC

DVC150L / DVC151L

HEPA  
filter  
(DVC151L)



## DC only

DVC152L / DVC153L

HEPA **BL XPT**  
filter MOTOR  
(DVC153L)



## DC only + AWS

DVC154L

HEPA **AWS BL XPT**  
filter MOTOR



# For Cleaning

Tank capacity

# 15 L

**DVC152L**

Max Air Flow

# 2.1 m<sup>3</sup>/min

Max Sealed Suction

# 9.8 kPa

Continuous use

# 40 min

Dial mode : 5  
with BL1850B x 2

## Wet & Dry

**DVC150L**



**DVC152L**

**BL MOTOR XPT**

DC only



### Dual battery fuel gauge

indicates the power remaining in each battery individually in 3 stages with 3 LEDs.



### Removable storage box

allows for storing the accessories and batteries.



### Large on-off switch

- allows for easy on/off switching.
- functions only when Main power switch is on to prevent accidental switch-on during transportation, etc.

### Main power switch

### Variable suction power control by dial

Suction power is variably adjustable to suit application.



## Brushless DC MOTOR

The brushless DC motor provides high suction power and long run time.

**BL MOTOR**



# For Dust Collecting

## Dry only

**DVC151L**

HEPA  
filter

AC



+

DC



**DVC153L**

**BL** HEPA **XPT**  
MOTOR filter

DC only



**DVC154L**

**AWS** **BL** HEPA **XPT**  
MOTOR filter

DC only



motor  
L / DVC154L

or allows for higher  
power continuous



**AWS**

**Auto-start Wireless System**  
DVC154L only

The wireless activation function enables clean and comfortable operation. By connecting a supported tool to the cleaner, you can run the cleaner automatically along with the switch operation of the tool.



wireless unit



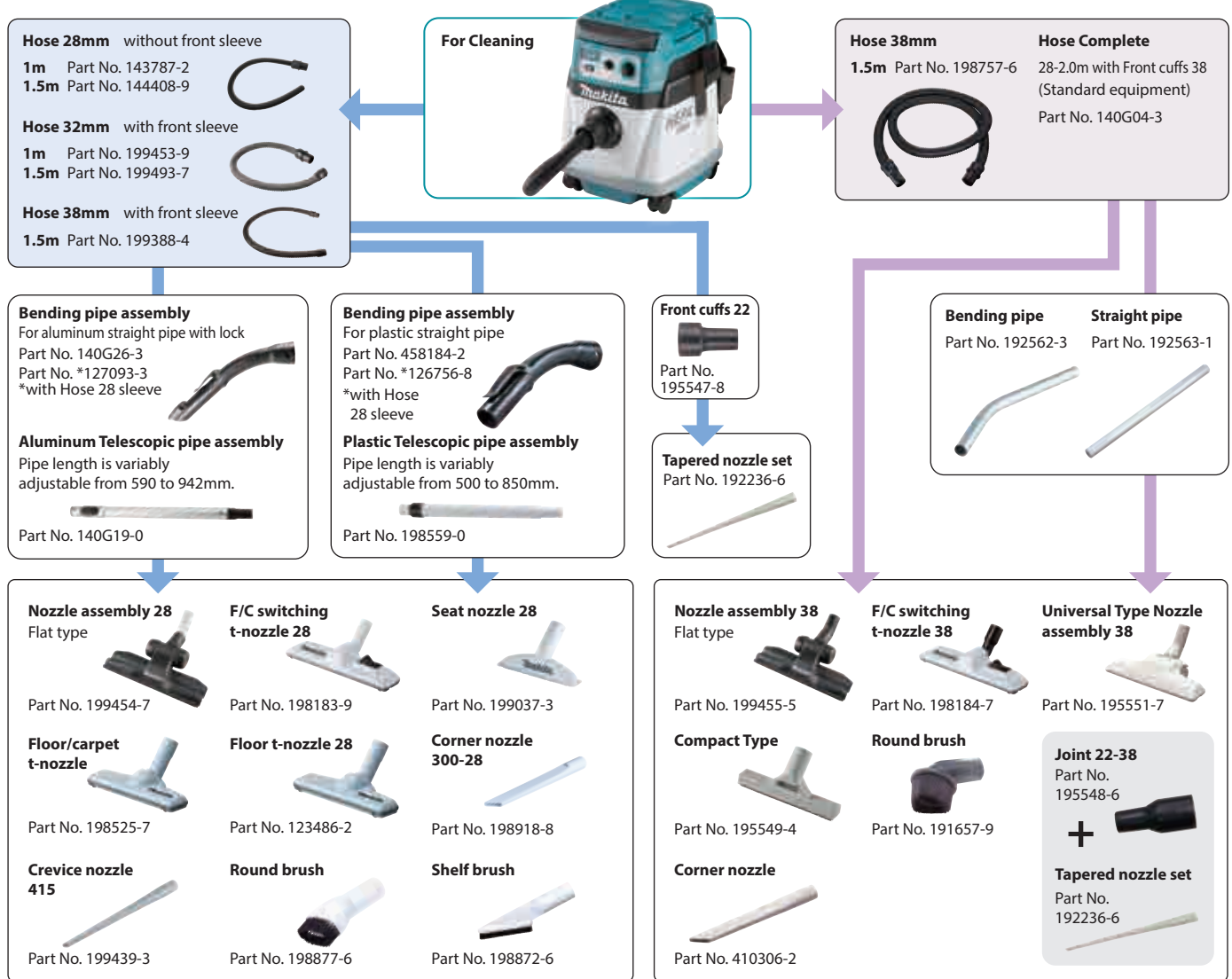
**AWS connects to power tool with Bluetooth**

The Bluetooth® word mark and logos are registered trademarks owned by the Bluetooth SIG, Inc. and any use of such marks by Makita is under license. Other trademarks and trade names are those of their respective owners.

**Expanding AWS Line-up**



## Accessories



## Filter complete, Pre filter and Damper

**Filter complete** *HEPA filter*  
 Dry only  
 Part No. 197166-6

**Pre-filter set**  
 Part No. 195553-3

**Cloth filter**  
 Part No. 140248-3

**Damper set**  
 Part No. 195552-5

**Filter for water set**  
 Water only  
 Part No. 195555-9

**Paper filter set (5pcs)**  
 for dry dust except powder  
 Part No. 194556-4 (A-48430)

**Dust paper filter 7L (5pcs)**  
 for dry powder  
 Part No. 194719-2 (A-49541)

**Filter bag set 15L (5pcs)**  
 for dry powder  
 Part No. 195557-5

**Poly bag set (10pcs)**  
 Part No. 195432-5

## Cordless Vacuum Cleaner Series

### DVC150L / DVC151L / DVC152L / DVC153L / DVC154L

	DVC150L	DVC151L	DVC152L	DVC153L	DVC154L
Double Insulation	Yes	Yes	Yes	Yes	Yes
Variable Speed	Yes	Yes	Yes	Yes	Yes
Revolving Hose	Yes	Yes	Yes	Yes	Yes
Static Free Hose	Yes	Yes	Yes	Yes	Yes
<b>Capacity</b>	Dust / Water: 15 / 12 L	Dust: 15 L	Dust / Water: 15 / 12 L	Dust: 15 L	Dust: 15 L
<b>Continuous Use (min.)</b>	w/ BL1850B x2: 30-65	w/ BL1850B x2: 30-65	w/ BL1850B x2: 40-100	w/ BL1850B x2: 40-100	w/ BL1850B x2: 40-100
<b>Max Air Flow</b>	AC / DC: 3.6 / 2.1 m <sup>3</sup> /min	AC / DC: 3.6 / 2.1 m <sup>3</sup> /min	DC: 2.1 m <sup>3</sup> /min	DC: 2.1 m <sup>3</sup> /min	DC: 2.1 m <sup>3</sup> /min
<b>Max Sealed Suction</b>	AC / DC: 24 / 9 kPa	AC / DC: 24 / 9 kPa	DC: 9.8 kPa	DC: 9.8 kPa	DC: 9.8 kPa
<b>Max Suction Power</b>	AC / DC: 320 / 70 W	AC / DC: 320 / 70 W	DC: 90 W	DC: 90 W	DC: 90 W
<b>Vibration Level</b>	2.5 m/s <sup>2</sup> or less	2.5 m/s <sup>2</sup> or less	2.5 m/s <sup>2</sup> or less	2.5 m/s <sup>2</sup> or less	2.5 m/s <sup>2</sup> or less
<b>Sound Pressure Level</b>	AC / DC: 75 / 64 dB(A)	AC / DC: 75 / 64 dB(A)	66 dB(A)	66 dB(A)	66 dB(A)
<b>Dimensions (L x W x H)</b>	366x334x421 mm (14-3/8"x13-1/8"x16-1/2")	366x334x421 mm (14-3/8"x13-1/8"x16-1/2")	366x334x421 mm (14-3/8"x13-1/8"x16-1/2")	366x334x421 mm (14-3/8"x13-1/8"x16-1/2")	366x334x421 mm (14-3/8"x13-1/8"x16-1/2")
<b>Net weight</b>	8.9 - 9.6 kg (19.7 - 21.1 lbs.)	9.6 - 10.3 kg (21.2 - 22.6 lbs.)	7.3 - 7.9 kg (16.0 - 17.4 lbs.)	8.0 - 8.6 kg (17.6 - 19.0 lbs.)	8.0 - 8.6 kg (17.6 - 19.0 lbs.)

**Standard Equipment:** Floor Nozzle, Corner nozzle, Hose complete, Plastic dust bag, Plastic dust bag set (10 pcs), Straight pipe (with Stopper), Bending pipe, Tool box, Battery, Charger, DVC150L/DVC151L: Connection cord (country-specific), DVC151L/DVC153L/DVC154L: Front cuffs

The weight may differ depending on the attachment(s), including the battery cartridge. The lightest and heaviest combination, according to EPTA-Procedure 01/2014, are shown in the table. Items of standard equipment and specifications may vary by country or area.

# Makita Corporation

3-11-8 Sumiyoshi-cho, Anjo, Aichi, 446-8502 Japan

PRINTED IN JAPAN 201905